

## Smart Camera

### User Guide

The user guide is for reference only. Screenshots displayed in this user's guide of the 'UBoxPro' app may appear differently than those currently featured in your app as frequent updates and improvements.

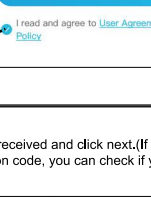
4G



We are committed to providing excellent after-sales service. If you have any questions, please scan the QR code.

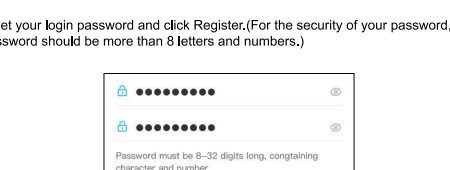
#### 1. DOWNLOAD AND INSTALL APP

(1.) Scan the QR code below and click install or search 'UBoxPro' on Appstore to download and install.

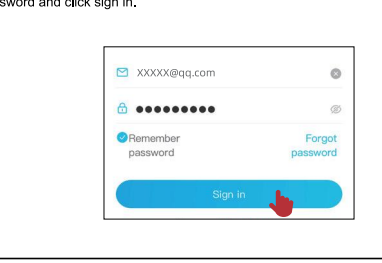


#### 2. APP REGISTRATION

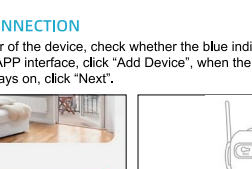
1. Click 'Register Now' option. (For better user experience, please allow all permissions to avoid not receiving notifications)



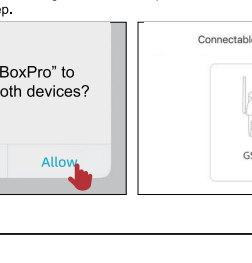
2. Please enter your email/phone number, click on User Agreement, click next to get the verification code.



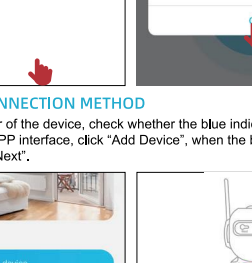
3. Enter the verification code received and click next. (If you are registering by email and did not find the verification code, you can check if you received the code in your spam mailbox)



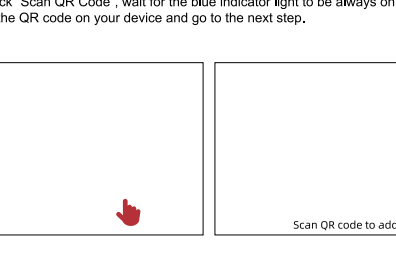
4. Set your login password and click Register. (For the security of your password, the password should be more than 8 letters and numbers.)



5. Enter your registered cell phone number or email address, then enter your password and click sign in.

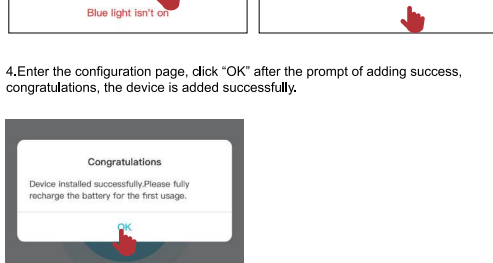


#### 3. CAMERA PAIRING (Turn on the device before use.)

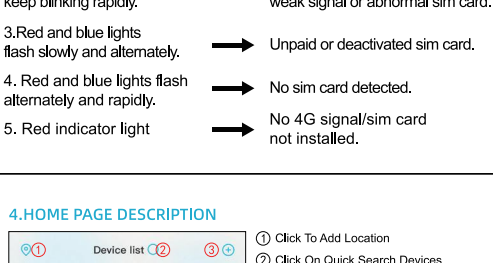


#### BLUETOOTH CONNECTION

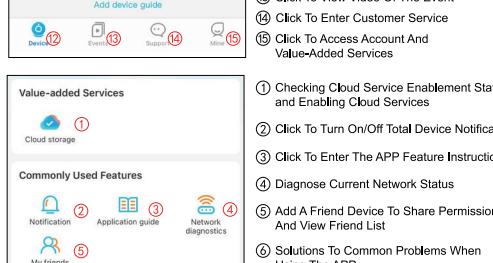
1. Turn on the power of the device, check whether the blue indicator light is always on, go back to the APP interface, click 'Add Device', when the blue indicator light of the device is always on, click 'Next'.



2. When APP pops up to allow 'UBoxPro' to search for Bluetooth devices, click 'Allow', APP will start to search for the device, when the corresponding UID device is found (the first 6 digits of the UID displayed on the list), 'Click' to jump to the next step.

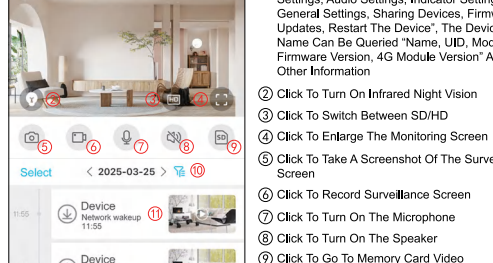


3. The device is automatically located in the address, the name can be changed to the name you need, change the click 'Next', enter the configuration page, add a successful prompt click 'OK', congratulations, the device is added successfully.

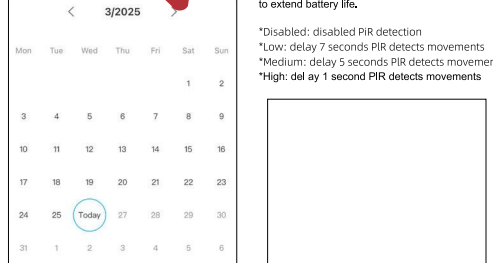


#### SCANNING CONNECTION METHOD

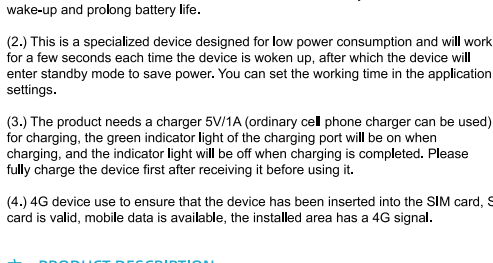
1. Turn on the power of the device, check whether the blue indicator light is always on, go back to the APP interface, click 'Add Device', when the blue indicator light is always on, click 'Next'.



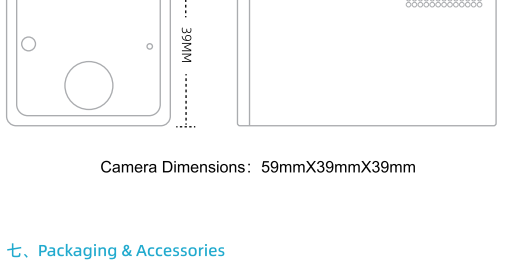
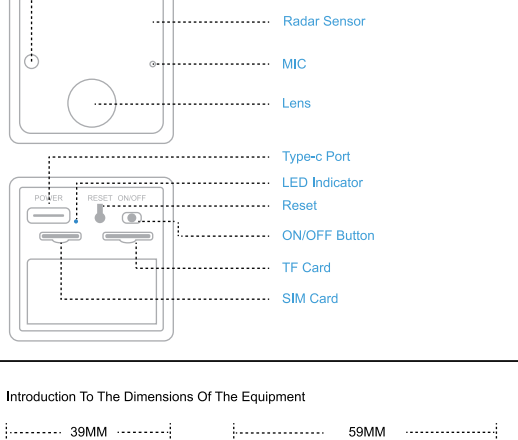
2. Click 'Scan QR Code', wait for the blue indicator light to be always on, then scan the QR code on your device and go to the next step.



3. After the blue light is always on, click Next, the device is automatically located in the address, the name can be changed to the name you need, after the change click Next.



#### 4. HOME PAGE DESCRIPTION



Click the calendar icon in the upper right corner and select the date to view all cloud videos for the current date.



Tips On Motion Detection:  
\*Motion detection sensitivity can be set in the device settings. When using in a crowded environment, it is recommended to turn off or set the device sensitivity to the lowest setting to avoid unnecessary wake-ups to extend battery life.  
\*Disabled: disabled PIR detection  
\*Low: delay 7 seconds PIR detects movements  
\*Medium: delay 5 seconds PIR detects movements  
\*High: delay 1 second PIR detects movements

#### 五、SPECIAL NOTES

(1.) The device is equipped with a rechargeable lithium battery. Therefore, when using the alarm detection function of the device in crowded environments, it is recommended to turn off the device or set it to low sensitivity to minimize device wake-up and prolong battery life.

(2.) This is a specialized device designed for low power consumption and will work for a few seconds each time the device is woken up, after which the device will enter standby mode to save power. You can set the working time in the application settings.

(3.) The product needs a charger 5V/1A (ordinary cell phone charger can be used) for charging, the green indicator light of the charging port will be on when charging, and the indicator light will be off when charging is completed. Please fully charge the device first after receiving it before using it.

(4.) 4G device use to ensure that the device has been inserted into the SIM card, SIM card is valid, mobile data is available, the installed area has a 4G signal.

#### 六、PRODUCT DESCRIPTION

Introduction to the device's function buttons



Camera Dimensions: 59mmX39mmX39mm

#### 七、Packaging & Accessories

1. Camera 2. User Guide 3. Type-C Charging Cable 4. Bracket

5. Mounting Accessories